

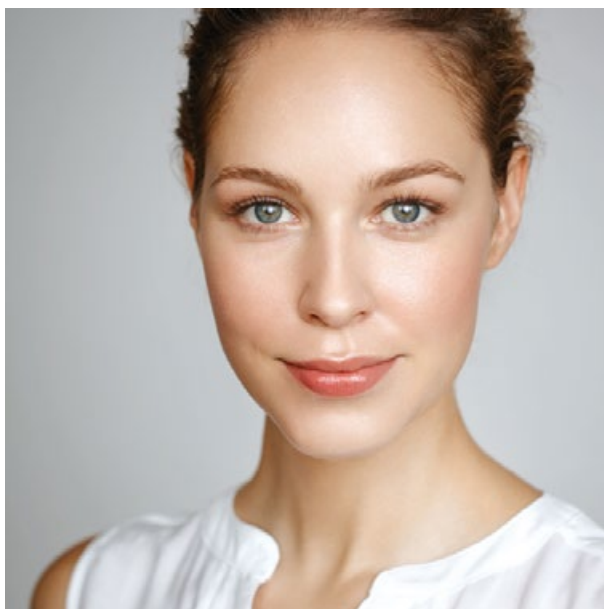
CLR Formulation Concepts

Night Balance Face Oil

Provides the ideal care for acne skin at night. This oil is easily absorbed and quickly leaves skin smooth without any greasy feeling. It balances the skin's natural lipid production. **CutiBiome CLR** calibrates the skin's ecosystem. During sleep when skin regenerates, it effectively and perceivably reduces sebum, papules, pustules and comedones for a pure complexion in the morning. **Vitamin F forte** nurtures and protects skin. It potently supports the skin in rebuilding and maintaining its healthy structure and functionality.

Directions for use:

Use the face oil every evening on cleansed skin. Gently massage into the skin.



Featured Products



CutiBiome CLR – Calibrating the skin's ecosystem

CutiBiome CLR is a synergistic complex of lipophilic extracts from manuka, black pepper and magnolia. It provides essential support for the natural balance between skin and its microbiota in difficult situations, like acne and dandruff.

CutiBiome CLR reduces the film forming activity and significantly inhibits the growth of virulent phylotypes of Cutibacterium acnes. It strongly reduces inflammation involved in acne and dandruff. Sebum, comedones, pustules and pimples are reduced dramatically, as was confirmed by instrumental determinations and the volunteers themselves. Other *in vivo* studies showed potent reduction of dandruff. 4 weeks of 3 times weekly use of a hair tonic with CutiBiome CLR lead to similar results to Piroctone Olamine, but clearly outperformed it in reducing scalp oiliness, sensitivity and itch.

Dosage: 1.5–3.0%
pH range: 4.0–7.0

INCI Name:
Octyldodecanol, Leptospermum
Scoparium Branch/Leaf Oil,
Piper Nigrum Fruit Extract,
Magnolia Officinalis Bark Extract



Vitamin F forte – Essential fatty acids nourishing skin & hair

Vitamin F forte is a strong hair conditioner, improving hair combability, and has shown to protect against hair breakage. In addition it has many positive features for skin.

Vitamin F forte contains natural polyunsaturated essential free fatty acids originating from safflower oil, with a particularly high content of linoleic acid.

Dosage: 0.5–3.0%
pH range: 3.0–10.0

INCI Name:
Linoleic Acid, Linolenic Acid

Night Balance Face Oil

135.009.01A

| PHASE | TRADE NAME | INCI NAME | SUPPLIER | W/W % |
|-------|------------------------------|--|---------------|--------|
| A | CETIOL J 600 | OLEYL ERUCATE | BASF | ad 100 |
| | CETIOL C 5C | COCO-CAPRYLATE/CAPRATE | BASF | 5.00 |
| | CETIOL SB 45 | BUTYROSPERMUM PARKII BUTTER | BASF | 0.50 |
| | MYRITOL 318 | CAPRYLIC/CAPRIC TRIGLYCERIDE | BASF | 8.00 |
| | CUTIBIOME CLR | OCTYLDODECANOL, LEPTOSPERMUM SCOPARIUM BRANCH/LEAF OIL, PIPER NIGRUM (PEPPER) FRUIT EXTRACT, MAGNOLIA OFFICINALIS BARK EXTRACT | CLR | 3.00 |
| | VITAMIN F FORTE | LINOLEIC ACID, LINOLENIC ACID | CLR | 3.00 |
| | DERMOFEEL TOCO 70 NON GMO | TOCOPHEROL, HELIANTHUS ANNUUS (SUNFLOWER) SEED OIL | EVONIK | 0.10 |
| | AROMATIC POMEGRANATE EXTRACT | PUNICA GRANATUM FRUIT EXTRACT | CARRUBBA INC. | 0.60 |

Manufacture:

Mix A and heat up to 40°C. Cool down under stirring.

Directions for use:

Use the face oil every evening on cleansed skin. Gently massage into the skin.

The recommendations and formulations given are based on our knowledge and experience in the field of technical application.

They are, to the best of our belief, correct, but are offered without obligation.

Those who use our recommendations and formulations as well as those who process CLR Active Agents are themselves responsible for the adherence to prevailing statutory regulations and the observance of patent rights as well as other protective rights for other companies.

This formula has been manufactured and stability-tested using a special preservative, but has not been subjected to microbiological challenge tests.

CLR

Chemisches Laboratorium Dr. Kurt Richter GmbH
Sperenberger Straße 3 · 12277 Berlin · Germany
Tel +49 30 851026-0 · Fax +49 30 851026-85
info@clr-berlin.com · www.clr-berlin.com

